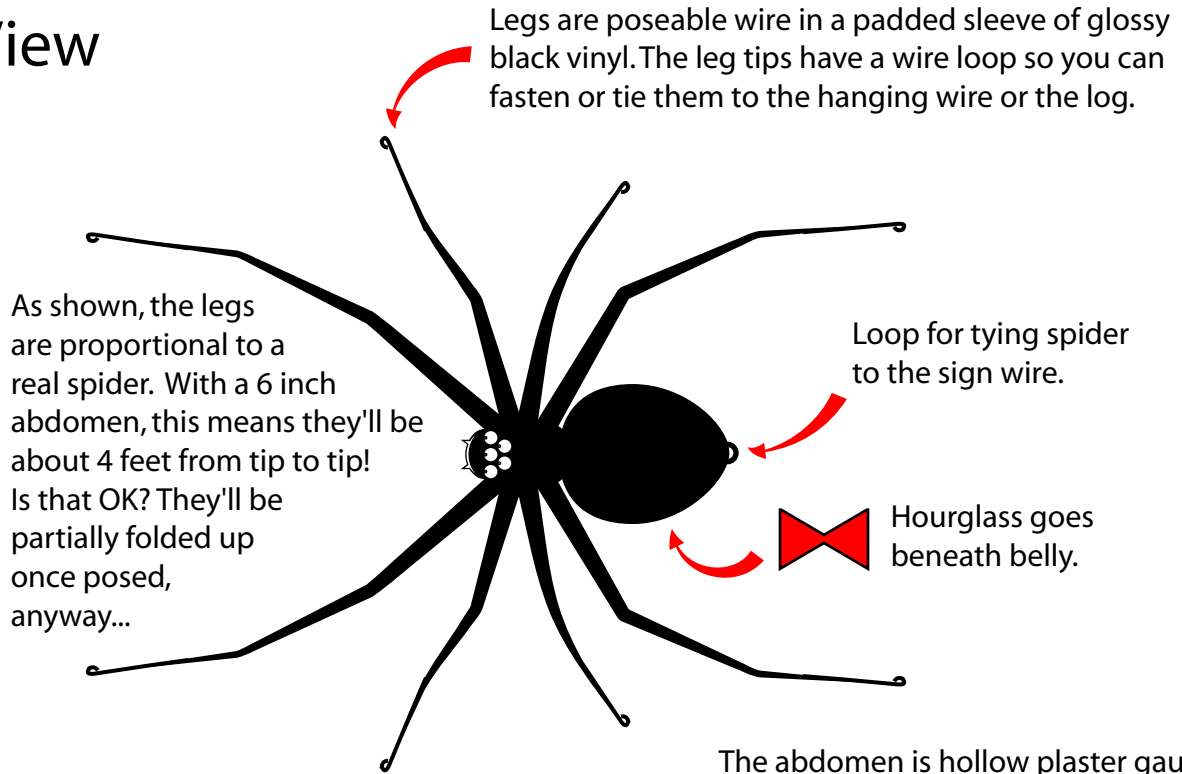


Spider Sculpture Proposal, 2005-01-18

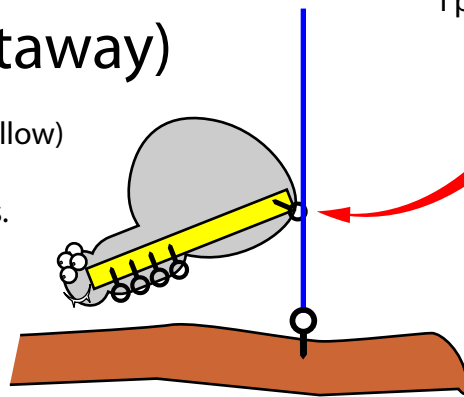
Jen Gagné, jen@beware-of-art.com

Top View



Profile View (cutaway)

The wood block (shown in yellow) is the spine of the sculpture. Screw eyes hold the leg wires.



Face



The face will only be a few inches across, so, which do you think would be bold enough for visibility from floor level? I know my original fang-infested drawing was too scary, but maybe the straight teeth work. Either is doable -- it's up to you!

